

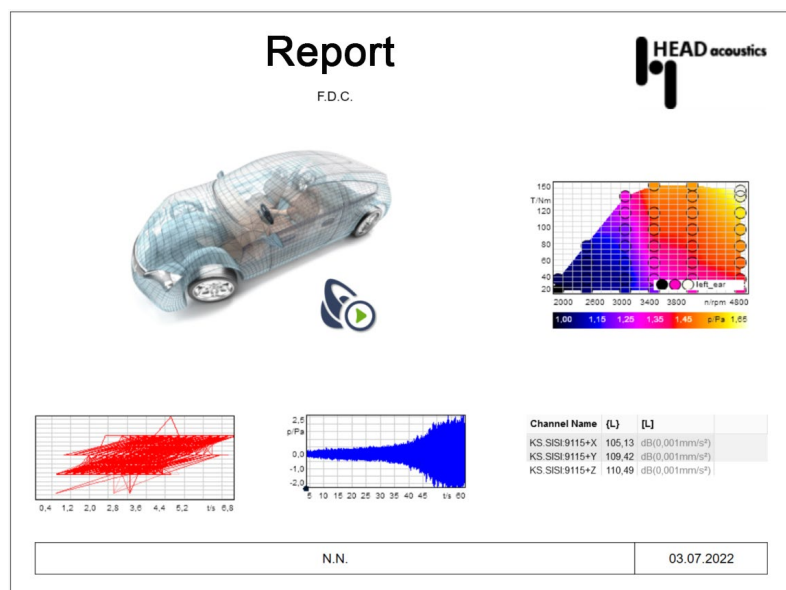
ArtemiS SUITE Basic Report (Code 5002)

Expansion module for customized
Report generation

Overview

Basic Report allows analysis results, audio content (in PowerPoint presentations), texts, images, documentation, etc. to be compiled into customized Reports, which can then be exported directly as PPTX or PDF files.

The entire scope of possible applications is covered: from simple one-page Reports to complex presentations complying with the customer's corporate design and containing many pages with automatically inserted diagrams, headlines, graphics, comments, and other information taken from the documentation embedded in the customer's files.



Features

- Convenient Report generation (HRPX format) from
 - existing data
 - a Pool Project
 - an Automation Project
 - a Standardized Test Project
- Export of Reports (HRPX) to PPTX or PDF format
- Comfortable comparison of several uniformly structured results
- Populate templates with a mouse click via the data binding window or via drag-and-drop from Windows Explorer, HEAD Navigator, database search, Frontend Reader
- Save Reports as templates for new Reports

Page layout templates

- Completely editable page layout templates with
 - placeholders for diagrams, texts, images, audio content, Single Values Tables, etc.

Generating Reports

- Custom configuration of new Reports (single- or multi-page), e.g., based on page layout templates
 - Edit line color and thickness for diagram curves
 - Scale and zoom within diagrams
 - Adjust the position and size of individual fields
 - Modify text

Re-using Reports

- Saved Reports can be used as templates for new Reports
 - Automatic data binding when creating Reports with comparable marks, analyses, etc.
- Duplicate Report templates for creating larger Reports
 - Extend Reports in a Pool Project by adding new, comparable marks (e.g., repeated measurements), and select new analyses or filters with automatic data binding

Export

- PPTX or PDF export
 - PowerPoint and Adobe Acrobat need not be installed

Editing Reports in PowerPoint

- After PPTX export
 - Edit images as vector graphics
 - Modify text
 - Play audio content (WAV, MP3) with a mouse click during the PowerPoint presentation

PowerPoint add-on: HEAD Interactive Diagram

- Using the diagram functioning of ArtemiS SUITE (zooming, scaling, zoom function) in PowerPoint (included in ASM 00)

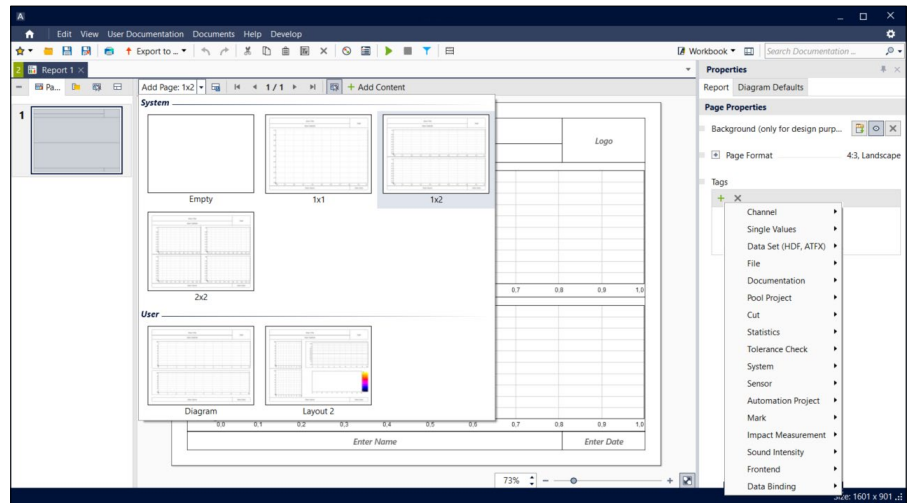
Generation of Reports from a Data Viewer

- Direct diagram export of a Data Viewer to the Report format of ArtemiS SUITE (HRPX)
- Automatic takeover of data binding from the Data Viewer

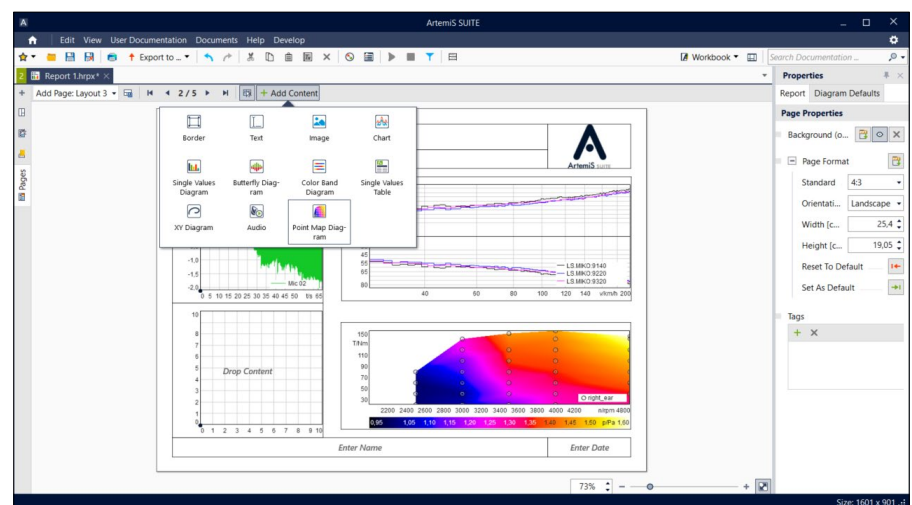
Additional features

Basic Report excels with its high efficiency and ease of use. Various handy tools facilitate the daily work routine and allow customers to create complex Reports in next to no time.

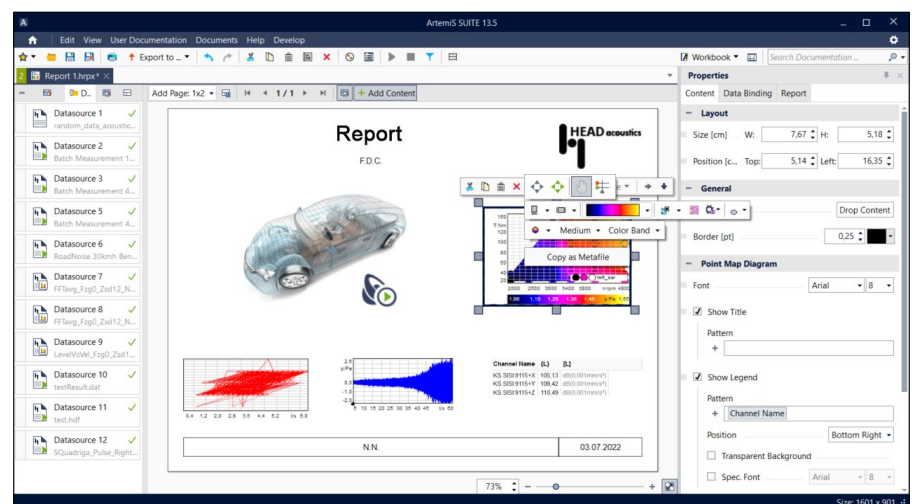
- Page overview
 - A quick overview of all pages in a Report and direct navigation between them
 - Edit, delete, or move pages
- Layout tools
 - Takeover of a page format used in an active PowerPoint presentation
 - "Snap to grid" function for aligning fields (for text, diagrams, logos, etc.)
 - Creating, managing, and editing dynamic layouts in the current Report
 - Cross-page selection of any Report elements available in the current Report
- Data binding
 - Clearly structured data binding with a mouse click
 - Display any number of time signals and 2D analysis results in a single diagram field
- Single Values Table
 - Automatic inclusion of single values in table form in a Report
- Editing of diagrams
 - Fill areas between diagram curves (e.g., to visualize tolerance violations)
 - Highlighting of important points in a diagram
- Preview
 - Preview (for the Reporting from a Pool Project) of the number and types of calculation results



A Report layout can be customized to your needs. Various templates are available, which can be adapted according to your requirements.



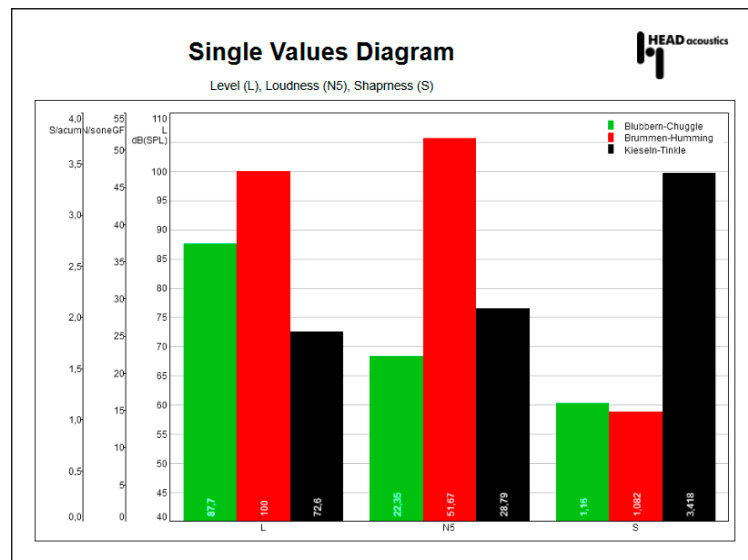
Similarly as in PowerPoint, the available Report elements can be selected and included into a Report.



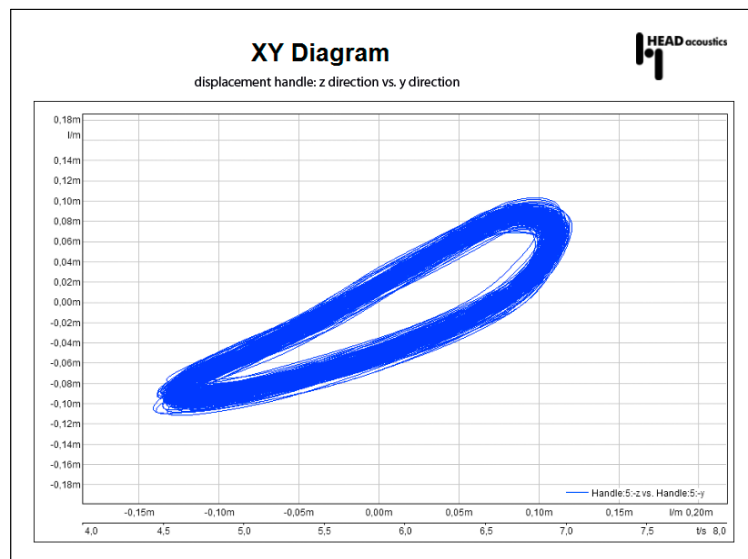
Texts, images, and diagrams can be edited. When creating additional standardized Reports based on this Report, the diagram settings and other parameters are maintained.

Special diagrams

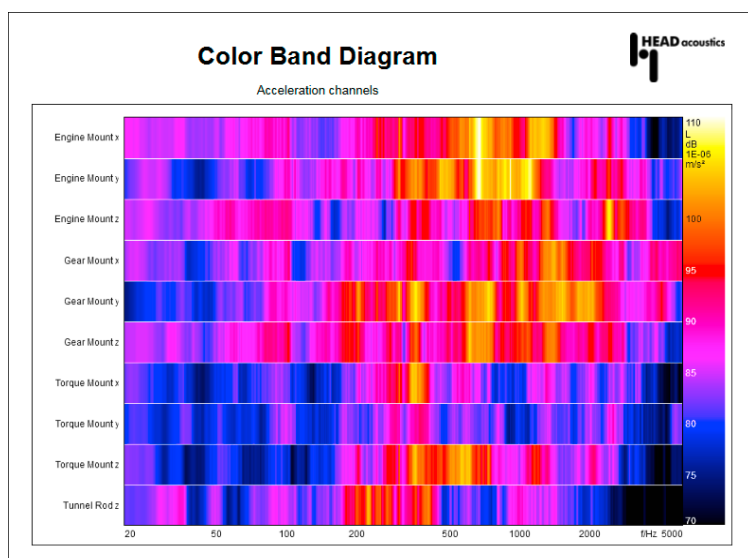
- Single Values diagram
 - Graphical display of single values (HDF or HSVX files) as bar graph
 - Combining multiple single values (minimum, maximum, average) to a single one to be visualized as data bar (e.g., maximum value of different measurements or average vs. channels)
- XY diagram
 - Graphical display of the relation of two channels of one or two HDF files with a common time abscissa (same physical quantity and unit and a common abscissa subarea)
 - Time data, 2D analysis vs. time/RPM, ...
 - Zoom function, e.g., for visualizing individual load cycles
 - Visualizing of deflections (deflection in z-direction vs. deflection in y-direction)
 - Displaying the vibrations of components, etc.
- Color Band diagram
 - Clearly arranged visualization of multiple 2D results in one diagram provides a quick overview, e.g., if there are many channels
 - Representing the 2D curves below each other as color bands (several abscissae and ordinates can be displayed)
 - Color-coding of the ordinates
 - Displaying time signals and 2D analysis results (absolute value for complex data)
 - Quick identification and comparison of "patterns"
 - Better control of multichannel measurements, e.g., by quickly detecting of useful signals or checking the level control
 - The path distribution of a transfer path analysis can be displayed clearly



With the Single Values diagram, the calculated single values can be displayed as data bars directly in the Report and exported to PowerPoint without using Excel.

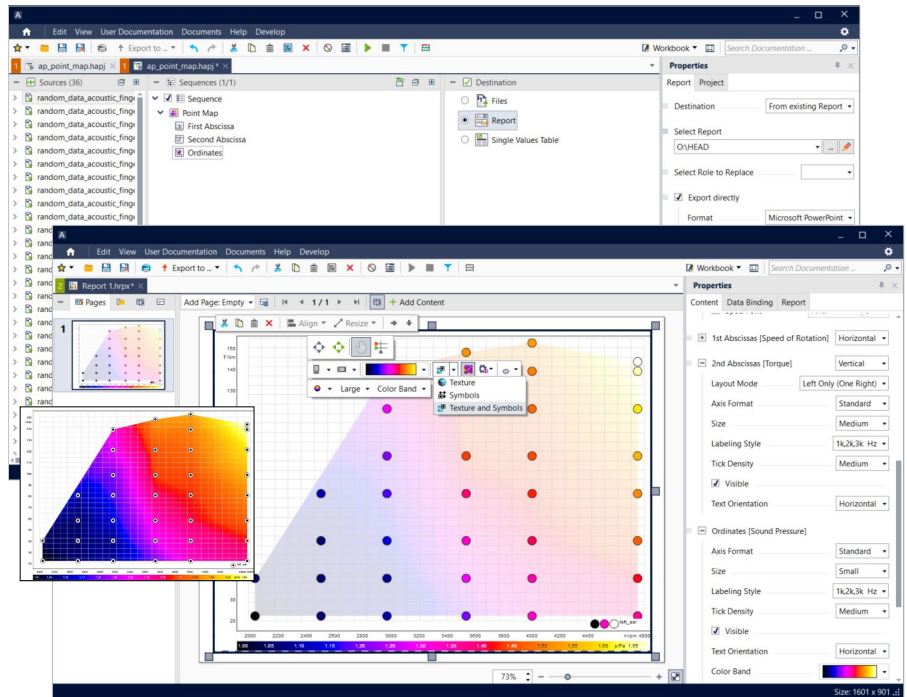


Example of an XY diagram in a Report. The XY diagram shows the representation of the deflection during a vibration measurement (z-deflection vs. y-deflection). By zooming, the desired temporal segment can be selected from the relation of the two channels.



The Color Band diagram is used for pseudo 3D representation of time signals and 2D analysis results in a Report.

- Point Map diagram
 - Graphical display of a single value as a function of two reference quantities
 - Corresponding data sets can be created with an Automation Project (ASM 01) using the elements Point Map and, optionally, Point Map Rasterization



In a sequence of an Automation Project, a Point Map process element can be added for the calculation of an HPMX file. Optionally, the Point Map Rasterization can also be defined in the Automation Project so that the specified rasterization is automatically taken into account in the Report.

Requirements

- ArtemiS SUITE Basic Framework (Code 5000)

Recommended software modules

- ArtemiS SUITE Basic Analysis (Code 5001)
 - ⇒ for generating Reports from a Pool Project
 - ⇒ for generating Reports from an Automation Project
- ArtemiS SUITE Standardized Testing (Code 5022)
 - ⇒ for generating Reports from a Standardized Test Project

PowerPoint and Excel are registered trademarks of the Microsoft Corporation; Adobe and Acrobat are registered trademarks of the Adobe Systems Incorporated.