

## ArtemiS SUITE Channel Calculation) (Code 5029)

Module for performing channel-related calculation functions

### Overview

With the Calculation Project, any channel or multiple channels simultaneously can be post-processed with customized mathematical operations. Text scripts of previous versions of ArtemiS SUITE are compatible.

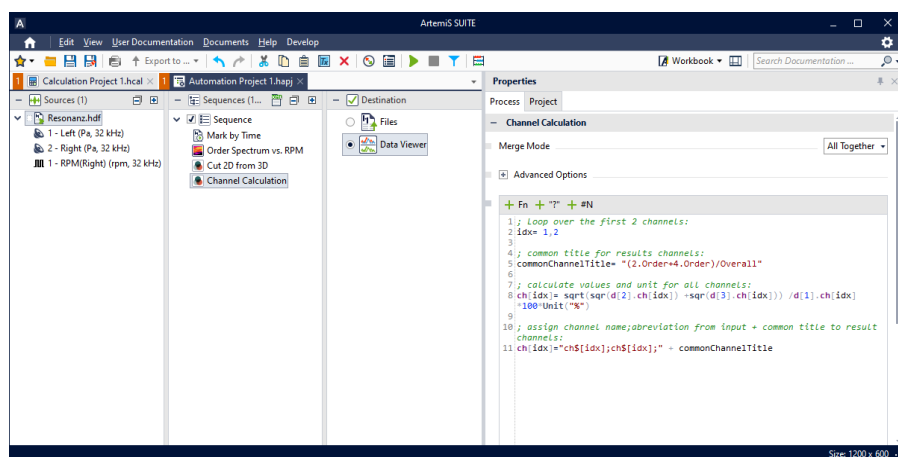
By means of a script, the processing options for each channel can be predefined (e.g. comparison to a reference channel), or cross-channel operations can be defined.

The Channel Calculation is performed in the Calculation Project, which is similar to a Pool Project. Thereby a similar structuring is applied, however, it is reduced to three pools being arranged consecutively.

For example, users can automatically adjust the level or DC for individual channels or for all channels. In addition, channels can be created using various mathematical functions (e.g. sin, log), and much more.

### Features

- Simultaneous processing of multiple channels using scripts
- Execution of various mathematical functions (e.g. sin, log, sign)
- 64-bit implementation
- Automated changing of channel measurement units
- Use of predefined code segments
- Color syntax highlighting
- Proposal lists
- Compatible with previous ArtemiS SUITE versions



### Requirements

- ASM 00 (Code 5000)  
Basic Framework
- ASM 01 (Code 5001)  
Basic Analysis Module  
or:  
ASM 06 (Code 5006)  
Automation Basic Analysis Module  
Required:  
ASM 05 (Code 5005)  
Automation API Module

Channel Calculation can be inserted into an Automation Project, in order to proceed level adjustments, comparisons with a reference channel or to define channel comprehensive operations, for example.