

ArtemiS SUITE  
Signal Processing

Codes 51703\_51707

## ASP 703 MDF4 Export

ASP 703 enables HDF files to be exported to ASAM Measurement Data Format.

## ASP 707 MDF4 Import

ASP 707 enables ASAM Measurement Data Format files to be imported to HDF.

# OVERVIEW

## ASP 703 MDF4 Export

Code 51703

## ASP 707 MDF4 Import

Code 51707

MDF4 Export and MDF4 Import enable quick and easy data exchange between ArtemiS SUITE and the ASAM Measurement Data Format.

In the Automation Project, MDF4 files can be imported via ASP 707, then automatically processed further via individually compiled sequences, and finally exported as MDF4 files again via ASP 703, for example.

## KEY FEATURES

### ASP 703 MDF4 Export

Export of time data from HDF to MDF4 (version 4.10)

- › The following projects and tools can be used for the export:
  - › Navigator (included in APR 000)
  - › Automation Project (APR 050 is required)
  - › Pool Project (APR 010 is required)
  - › Standardized Test Project (APR 220 is required)

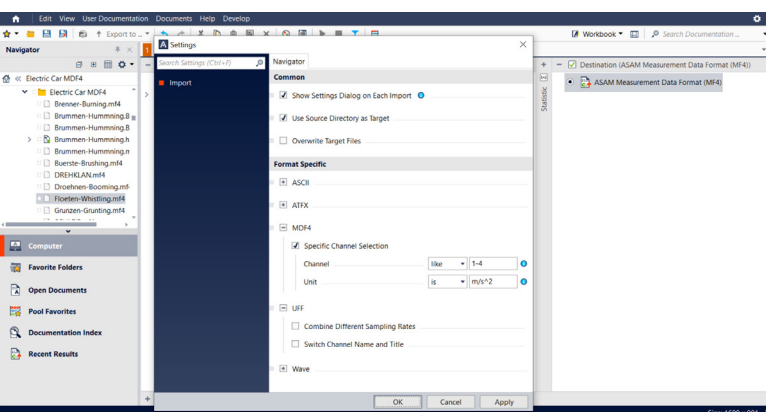
### ASP 707 MDF4 Import

Import of time data from MDF4 (version 4.10) to HDF

- › The following projects and tools can be used for the import:
  - › Navigator (included in APR 000)
  - › Automation Project (APR 050 is required)

## APPLICATIONS

- › Data exchange between HDF and MDF4 in ArtemiS SUITE



## MDF4 Export (ASP 703)

The ASAM Measurement Data Format Export enables HDF time data to be exported to MDF4.

- › Version 4.10 MDF4 files are supported; this version complies with the Association for Standardization of Automation and Measuring Systems (ASAM) basic standard.

### Restrictions

- › It is not possible to export analysis results.

## MDF4 Import (ASP 707)

The ASAM Measurement Data Format Import enables MDF4 time data to be imported to HDF.

- › The import includes
  - › analog channels with calculated (equidistant) and stored abscissas that are converted into calculated ones
  - › analog channels of the "Value" type
    - › if the data is distributed over several blocks ("Data List") or compressed ("Data Zipped")
    - › if the data has mixed sampling rates; if necessary, a sampling rate conversion can be used (ASP 301 is required)
  - › By default, all channels of an MDF4 file are imported.
  - › The channels to be imported can be individually specified by names, numbers, or physical units (according to the units defined in ArtemiS SUITE).

### Restrictions

- › Raw bus data, such as CAN bus data, is not supported yet.
- › Uncompleted recordings cannot be imported
- › Recordings with unsorted data storage ("Data Groups" with several "Channel Groups") cannot be imported.

**Required: APR Framework (Code 50000)**  
**and/or: HEAD System Integration and Extension (ASX) programming interfaces**



## Contact Information

Ebertstrasse 30a

52134 Herzogenrath, Germany

**Phone:** +49 2407 577-0

**E-Mail:** [sales@head-acoustics.com](mailto:sales@head-acoustics.com)

**Website:** [www.head-acoustics.com](http://www.head-acoustics.com)