



ArtemiS SUITE  
Signal Processing

Code 51501\_51502

# ASP 501/502 Jury Testing - SQala Net/SQala Server

**ASP 501 and ASP 502 of ArtemiS SUITE extend Jury Testing - SQala Basic (APR 500) and can be used to manage and to perform listening tests in listening studios and Distributed Sessions with multiple participants.**

# OVERVIEW

## ASP 501 Jury Testing - SQala Net

Code 51501

## ASP 502 Jury Testing - SQala Server

Code 51502

ASP 501 and ASP 502 are extensions for the modular SQala jury testing software. The SQala listening tests, created with Jury Testing - SQala Basis (APR 500), can be performed with multiple participants in listening studios and in Distributed Sessions.

## KEY FEATURES

ASP 501 and ASP 502 are extensions for APR 500 to perform listening tests with multiple participants

- › A license of APR 500 is required

ASP 501 provides:

- › SQala Session Administration
  - › Interactive monitoring and supervision of listening tests
  - › Status overview for all individual participants during a listening test
- › SQala Server Manager
  - › Functional server for managing and saving SQala Projects
  - › Straightforward provision of sessions in listening studios
  - › User friendly establishing of the connection between the SQala Server and the individual SQala Clients (participants)

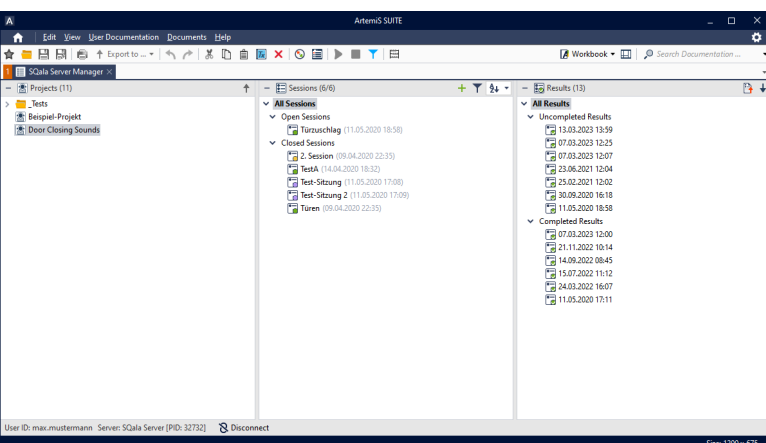
ASP 502 provides the SQala Server and the license for performing SQala Net (ASP 501) listening tests

SQala Client must be installed on each listening place (PC, tablet, etc.)

- › Full touchscreen support
- › No license is required

## APPLICATIONS

- › Benchmarking
- › Defining target sounds
- › Optimizing product sounds



# DETAILS

## Jury Testing - SQala Net (ASP 501)

### SQALA SESSION ADMINISTRATION

SQala Net enables listening tests created with APR 500 to be performed with multiple participants in a listening studios (Individual Mode or Group Mode) and Distributed Sessions (distributed single-place systems or even listening places in a listening studio that can participate in a session at any time). The test leader is provided with a number of control tools.

For supervising the listening tests, SQala Session Administration is provided as a straightforward monitoring and control tool.

The tool helps test leaders to keep full control and overview of all listening test steps. They can intervene at any time and, for example, unlock certain steps or add new participants.

In the case of possibly unintended playback modifications by the participants, the supervisor is automatically alerted.

A graphical interface displays the progress of each participant at any time, as well as the completion of the listening test. Tooltips provide additional information, e.g., about the number of referenced sound files. The results of listening tests can be exported to Excel for further processing.

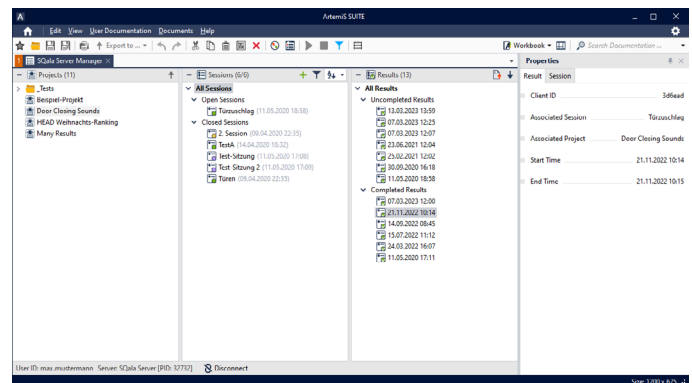
### SQALA SERVER MANGER

The SQala Server Manager is used to provide a session to multiple participants in a listening studio scenario or in the distributed mode and to store the session results.

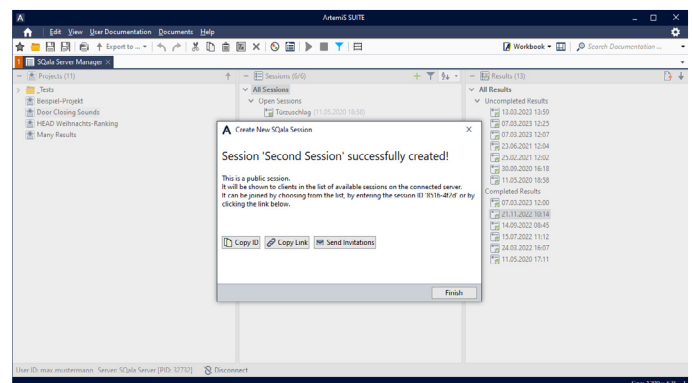
The connection between the SQala Server and the individual SQala Clients (participants) is established very quickly.

## Jury Testing - SQala Server (ASP 502)

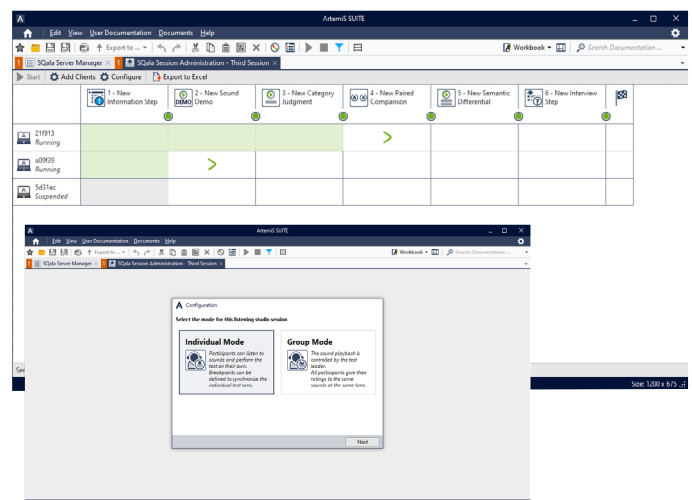
Jury Testing - SQala Server provides the SQala Server for performing SQala Net (ASP 501) listening tests.



Managing the results of a listening test with the Server Manager.



Creating listening studio sessions.

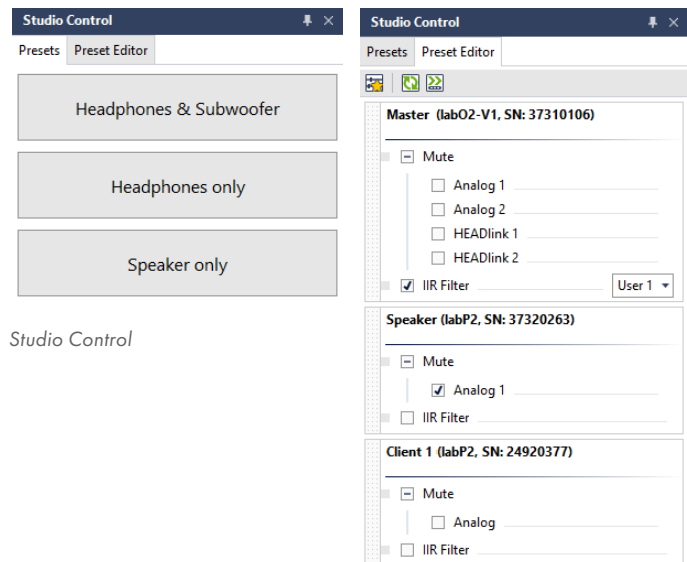


Managing the listening test in individual mode with the Session Administration.

## Studio Control

Studio Control (APR 110 is required) serves for the quick configuration of playback modules and headphones from HEAD acoustics for the usage in a listening studio.

Users can edit and save distinct playback scenarios (the signal distribution and filter settings of the playback modules). After the composition of individual listening studio configurations, users can switch between the needed configurations with a single click. The signal distribution and the individual filter settings of the playback frontends are automatically adjusted.



Studio Control

## Binaural aurally-accurate playback for listening studios

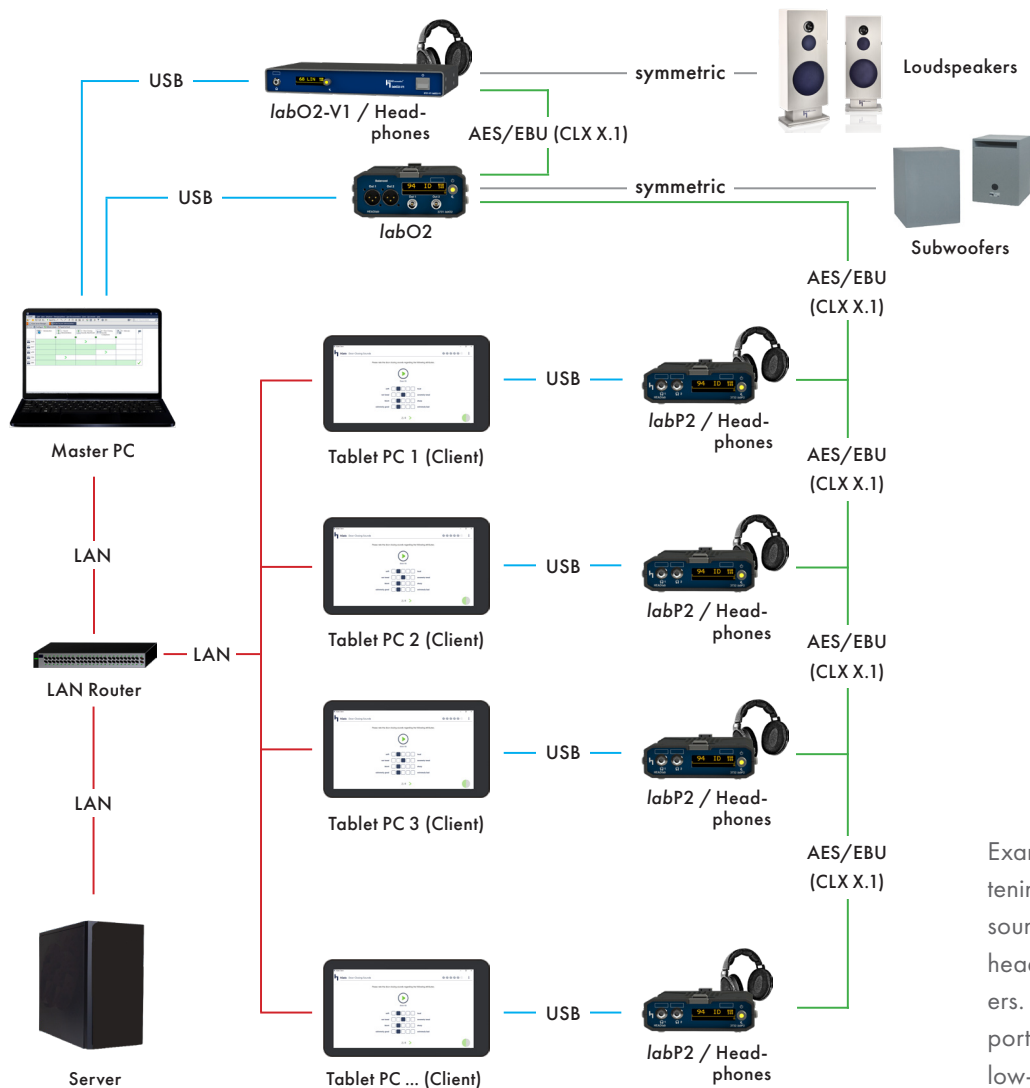
In order to enable the participant to judge the sounds authentically during listening tests, the playback must be acoustically accurate. To achieve this, HEAD acoustics provides several playback modules, headphones, and loudspeakers from a hand that perfectly match SQuala.

- › HEADlab playback modules
  - › labP2 (Code 3732)
  - › labP2-V1 (Code 3732-V1)
  - › labO2 (Code 3731)
  - › labO2-V1 (Code 3731-V1)
- › Headphones recommended by HEAD acoustics
- › Loudspeakers
  - › HPL (Code 2968)
    - 2 x High Precision Loudspeaker
  - › HSW I (Code 2950)
    - HEAD subwoofer



The playback modules labO2 and labP2 are ideal for listening studios. Two equalized headphones can be connected to a labP2 for aurally-accurate playback. labO2 controls aurally accurate playback with loudspeakers and controls subwoofers to support headphone playback in the low-frequency range.

# EXAMPLE CONFIGURATION



Example configuration of a SQala listening studio with Group Mode. The sounds can be played back either via headphones or via the loudspeakers. The subwoofers are used to support the headphone playback in the low-frequency range.

## Required:

- › **APR 000 Framework (Code 50000)**
- › **APR 500 Jury Testing - SQala Basis (Code 50500)**



## Contact Information

Ebertstrasse 30a

52134 Herzogenrath, Germany

**Phone:** +49 (0) 2407 577-0

**E-Mail:** [sales@head-acoustics.com](mailto:sales@head-acoustics.com)

**Website:** [www.head-acoustics.com](http://www.head-acoustics.com)