

ArtemiS SUITE  
Signal Processing

Code 51304

# ASP 304 Batch RPM Generator

Based on an RPM Generator template (APR 080 is required), the Batch RPM Generator of ArtemiS SUITE enables reference quantities to be generated in batch mode from many similar recordings. In addition, the RPM generation in batch processing mode can be integrated into an Automation Project (APR 050 is required).

# OVERVIEW

## ASP 304 Batch RPM Generator

Code 51304

Using a suitable RPM Generator template, the Batch RPM Generator enables the simultaneous generation of reference quantities for multiple similar recordings. In addition, the Batch RPM Generator can be embedded in an Automation Project.

The Batch RPM Generator can be applied to a larger number of similar recordings simultaneously to generate RPM curves at the touch of a button. The algorithm even detects the correct revolution speed for recordings of different lengths, keeping manual adjustments to a minimum.

Embedded in an Automation Project, a batch RPM generation process can be performed without user interaction and be used automatically for further processing tasks.

## KEY FEATURES

Easy-to use generating of reference quantities for multiple similar recordings using an RPM Generator template

Detecting the correct revolution speed for recordings of different lengths, keeping manual adjustments to a minimum

All results for each channel are displayed in the FFT vs. Time diagram for control purposes

The order determined for each channel is displayed in a table

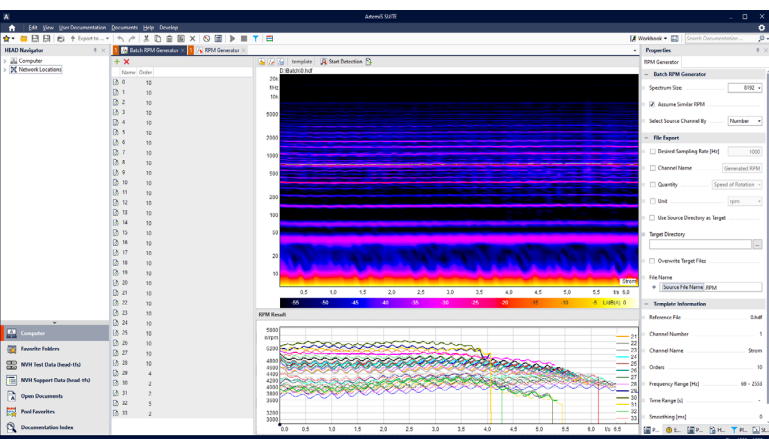
The result of the revolution speed determination converted from the frequency is displayed in the RPM vs. Time diagram

RPM Generator templates can be embedded into an Automation Project as a normal processing step and be applied to entire folders with a large number of similar files in batch mode

## APPLICATIONS

Intuitive generation of RPM curves from significant order curves in batch mode for:

- › Evaluation of a series of recordings
- › End-of-line applications
- › Test bench recordings
- › ...



# DETAILS

## Batch RPM Generator

The Batch RPM Generator is used to process similar recordings or entire recording series in one step.

The handling is simple. Users select a reference recording, generate the RPM curve by means of the RPM Generator, and use the result as a template for further recordings. The RPM detection algorithm utilizes the template and the parameters it contains and applies them to any number of recordings in batch mode.

Templates can be saved, edited, and used at any time.

To combine several results, multiple selection is supported. Manual adjustments, for example, a correction of the order number, can also be performed later on.

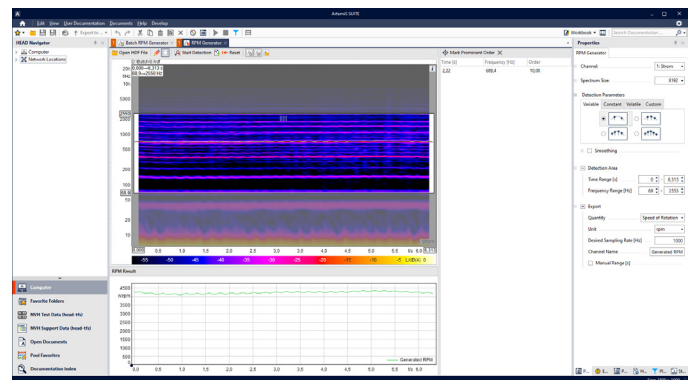
## Batch RPM Generator embedded in an Automation Project

The Automation Project (APR 050 is required) is a perfect solution for integrating the RPM generation in batch processing mode into automated processes.

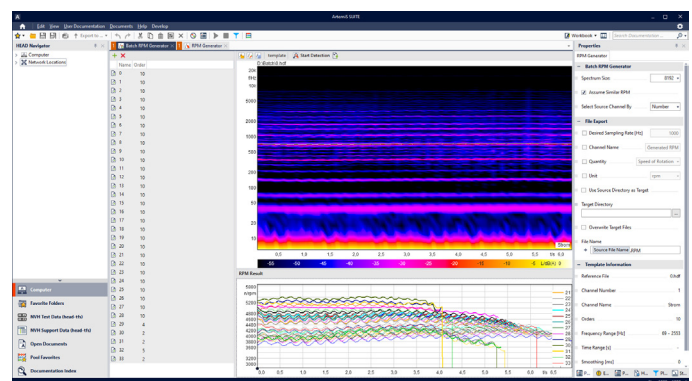
In an Automation Project, various functions such as selecting, cutting, filtering, analyzing, calculating single values, importing, and exporting can be executed without user action. The automated output of the results as a file, in the Data Viewer, or in a Report (APR 020 is required) is also possible.

To integrate the Batch RPM Generator into an Automation Project, users simply need to insert a template, created with APR 080, as a Batch RPM Generator element into a suitable processing sequence.

Via the HEAD Navigator, Automation Projects with batch RPM generation can also be applied to entire folders with a large number of similar files.



Templates made with the RPM Generator ...



... can be applied to a complete data set using the Batch RPM Generator.

## REQUIREMENTS

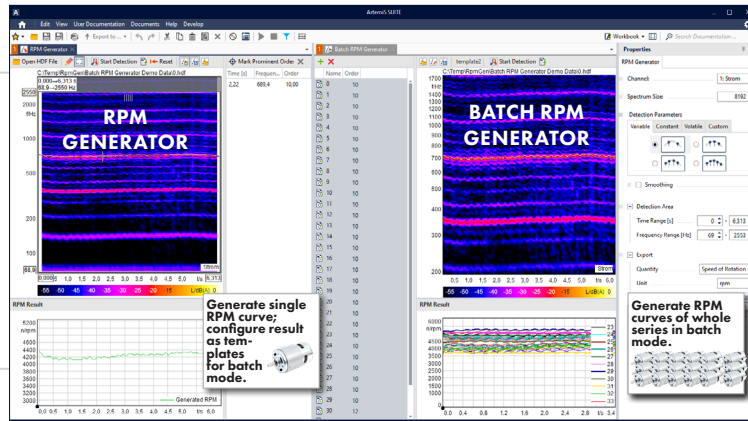
- › The template created with the RPM Generator and the files for the batch process must contain:
  - › The same channel names or numbers
  - › Similar dominant orders
- › The template must have provided a reasonable result without manual corrections in the RPM Generator
- › RPM generation is only possible for a coherent area
- › In the template, the order curves should be clearly marked with only one point each

# BATCH RPM GENERATOR (ASP 304) AND RPM GENERATOR (APR 080)

While the RPM Generator (APR 080 is required) generates RPM curves for a single recording at a time, the Batch RPM Generator can be applied to a larger number of recordings simultaneously. In addition, the Batch RPM Generator can be used for Automation Projects (ARP 050 is required) to embed the batch RPM generation task into the recording, analysis, and processing tasks, which are performed without user interaction.

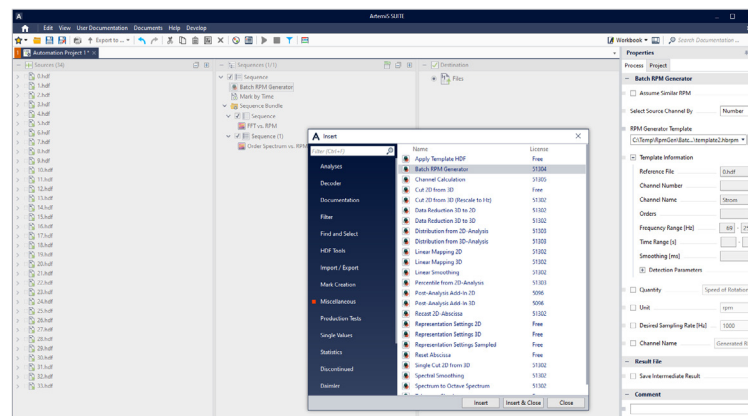
## RPM GENERATOR (APR 080)

To create and to store templates for using with the Batch RPM Generator, only an APR 080 license is required.



## BATCH RPM GENERATOR (ASP 304)

To use RPM Generator templates with the Batch RPM Generator, only a license for ASP 304 is required.



## Batch RPM Generator embedded in an Automation Project

To use RPM Generator templates in an Automation Project, licenses for ASP 304 and APR 050 are required.

**Required: APR 000 Framework (Code 50000)**



## Contact Information

Ebertstrasse 30a  
52134 Herzogenrath, Germany  
**Phone:** +49 (0) 2407 577-0  
**E-Mail:** sales@head-acoustics.com  
**Website:** www.head-acoustics.com