

ArtemiS SUITE
Project

Code 50020

APR 020 Report

A Report is a central element of ArtemiS SUITE and can be used to present filtered, analyzed, and statistically processed input signals conveniently and with a single click in a customized report. This makes it perfectly suitable for many projects such as Pool Projects, Automation Projects, Standardized Test Projects, Sound Intensity Measurement, or Impact Measurement.

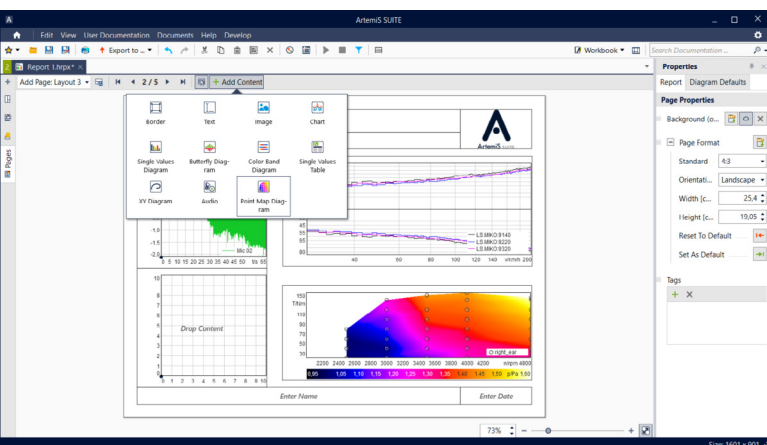
OVERVIEW

APR 020 Report

Code 50020

A Report enables analysis results, audio contents (in PowerPoint presentations), texts, images, documentation, etc. to be compiled into customized reports, which can then be exported directly as PPTX or PDF files.

A Report excels with its high efficiency and ease of use and covers the entire scope of possible applications: from simple one-page reports to complex presentations complying with the customer's corporate design and containing many pages with automatically inserted diagrams, headlines, graphics, comments, and other information taken from the documentation embedded in the customer's files.



KEY FEATURES

Convenient Report generation from

- › existing data
- › Pool Projects (APR 010 is required)
- › Automation Projects (APR 050 is required)
- › Standardized Test Projects (APR 220 is required)
- › ...

Export of Reports to PPTX or PDF format (PowerPoint and Adobe Acrobat need not be installed)

Custom configuration of new reports, e.g., based on editable page layout templates with placeholders for diagrams, texts, images, audio contents, Single Values Tables, etc.

Edit line color and thickness for diagram curves, scale and zoom within diagrams, adjust the position and size of individual fields, modify text

Re-use Reports as templates for new reports

- › Automatic data binding when creating reports with comparable marks, analyses, etc.
- › Report templates can be duplicated

Edit Reports in PowerPoint after PPTX report

The PowerPoint add-in HEAD Interactive Diagram (included in APR 00) can be used after reporting

APPLICATIONS

- › Customized data presentation of even complex analysis results in a simple, quick, and intuitive way
- › Automated report generation
- › Interaction with many projects and tools of ArtemiS SUITE

DETAILS

Various handy tools facilitate the daily work routine and enable customers to create complex reports in next to no time.

Page overview

- › A quick overview of all pages in a Report and direct navigation between them
- › Edit, delete, or move pages

Layout tools

- › Takeover of a page format used in an active Power-Point presentation
- › "Snap to grid" function for aligning fields (for texts, diagrams, logos, etc.)
- › Creating, managing, and editing dynamic layouts
- › Cross-page selection of all reporting elements available in the current Report

Data binding

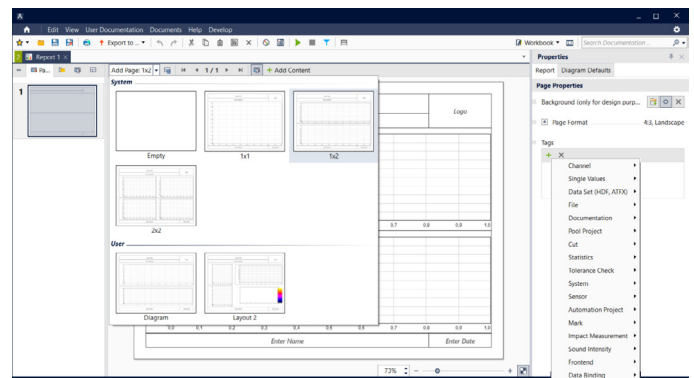
- › Clearly structured data binding with a mouse click
- › Display any number of time signals and analysis results in a single diagram field

Single Values Table

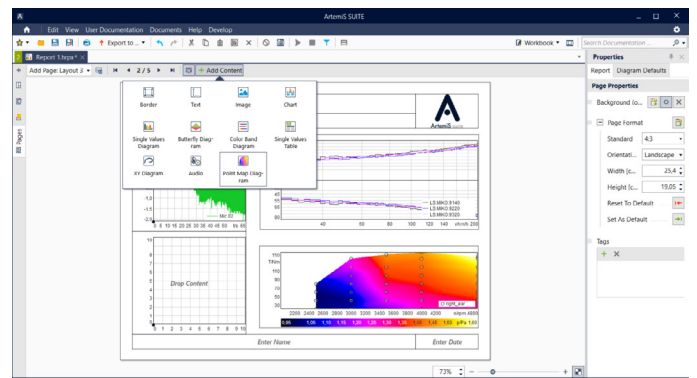
- › Single values can be integrated into a report in table form

Editing diagrams

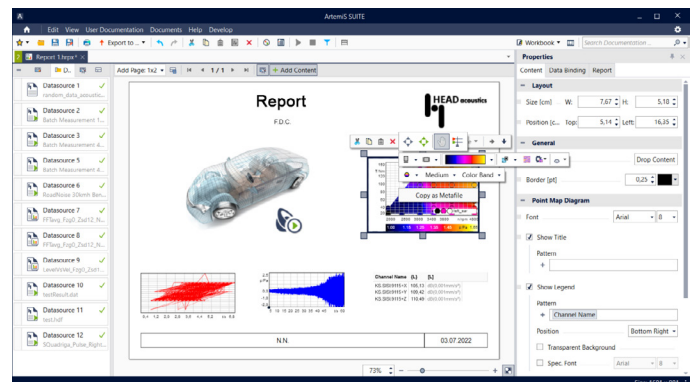
- › Areas between diagram curves (e.g., to visualize tolerance violations)
- › Highlighting of important points in a diagram



Various templates are available.



Similar as in PowerPoint, the available report elements can be selected and included into a Report.



Texts, images, and diagrams can be edited. When creating additional standardized Reports based on this Report, the diagram settings and other parameters are maintained.

SPECIAL DIAGRAMS

Single Values Diagram

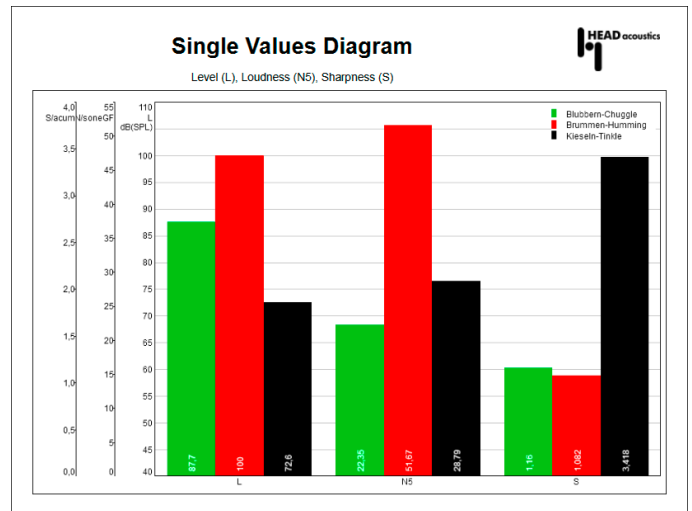
- › Graphical display of single values (HDF or HSVX files) as bar graphs
- › Combining multiple single values (minimum, maximum, average) to a single one to be visualized as data bar (e.g., maximum value of different measurements or average vs. channels)

XY Diagram

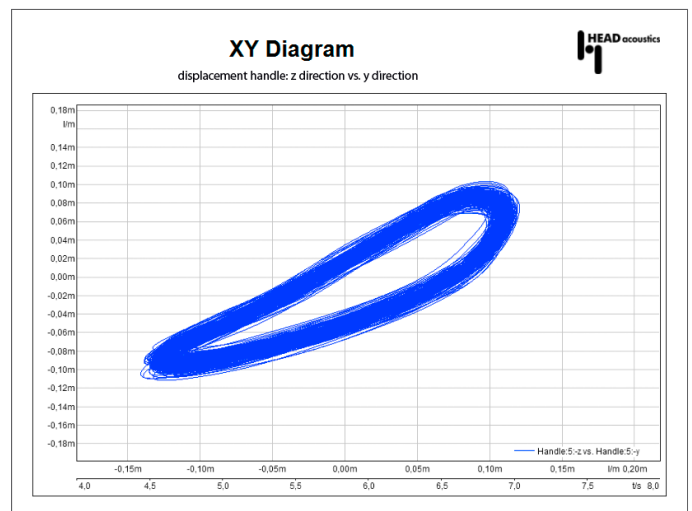
- › Graphical display of the relation of two channels of one or two HDF files with a common time abscissa (same physical quantity and unit and a common abscissa subarea)
- › Time data, 2D analysis vs. time/RPM, ...
- › Zoom function, e.g., for visualizing individual load cycles
- › Visualizing of deflections (deflection in Z-direction vs. deflection in Y-direction)
- › Displaying the vibrations of components etc.

Color Band Diagram

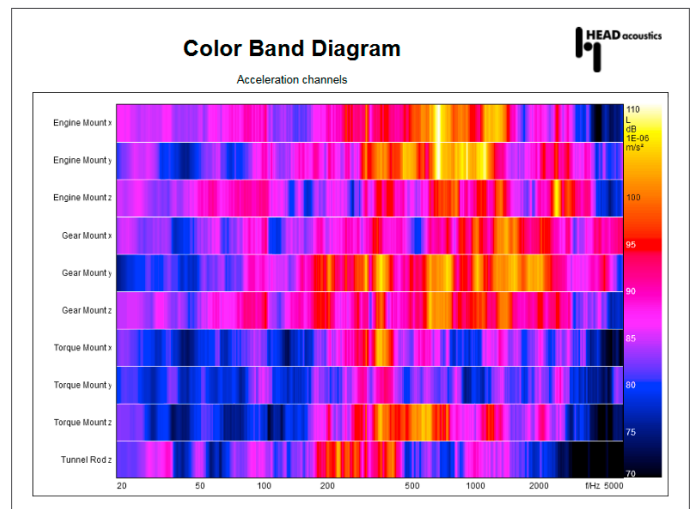
- › Clearly arranged visualization of multiple 2D results in one diagram provides a quick overview, e.g., if there are many channels
- › Representing the 2D curves below each other as color bands (several abscissas and ordinates can be displayed)
- › Color-coding of the ordinates
- › Displaying time signals and 2D analysis results (absolute value for complex data)
- › Quick identification and comparison of "patterns"
- › Better control of multichannel measurements, e.g., by quickly detecting of useful signals
- › The path distribution of a transfer path analysis can be displayed clearly



Single Values Diagram



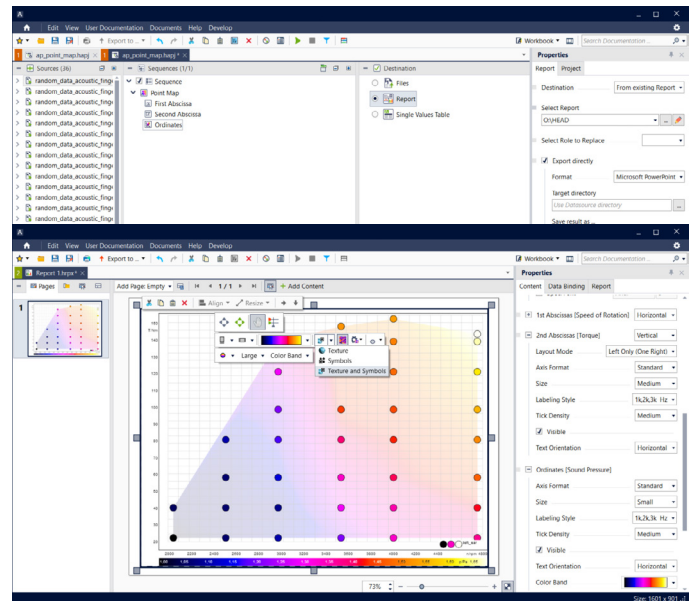
XY Diagram



Color Band Diagram

Point Map Diagram

- › Graphical display of a single value as a function of two reference quantities
- › Corresponding data sets can be created with an Automation Project (APR 050 is required) using the elements Point Map and, optionally, Point Map Rasterization



Point Map Diagram: In a sequence of an Automation Project, a Point Map process can be added for the calculation of an HPMX file. Optionally, the Point Map Rasterization can also be defined in the Automation Project so that the specified rasterization is automatically taken into account in the report.

Required: APR Framework (Code 50000)
and/or: HEAD System Integration and Extension (ASX) programming interfaces



Contact Information

Ebertstrasse 30a
 52134 Herzogenrath, Germany
Phone: +49 (0) 2407 577-0
E-Mail: sales@head-acoustics.com
Website: www.head-acoustics.com